

Job Name: 26-2257 - 233 SE Third St.  
 Job Location: Evansville, IN  
 Contractor: Empire Contractors, Inc.

Plant: 100

6/1/2026 8:28:10 AM

Tech: Jared - A

PC: E. Bradley



**Structure ID: AD 500 ST-AD**

**P2 BX4848\_08LD06**

**CB FLAT TOP 8"W w/30"x30" HOLE F/F**

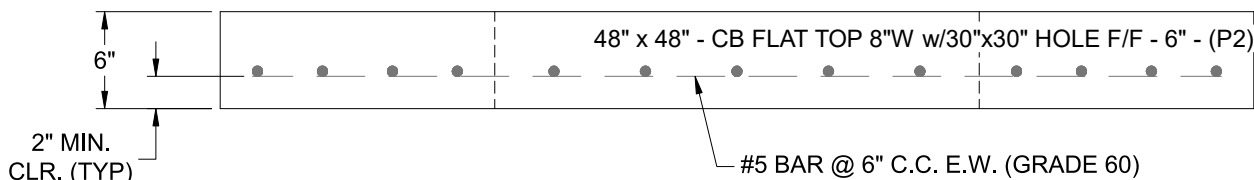
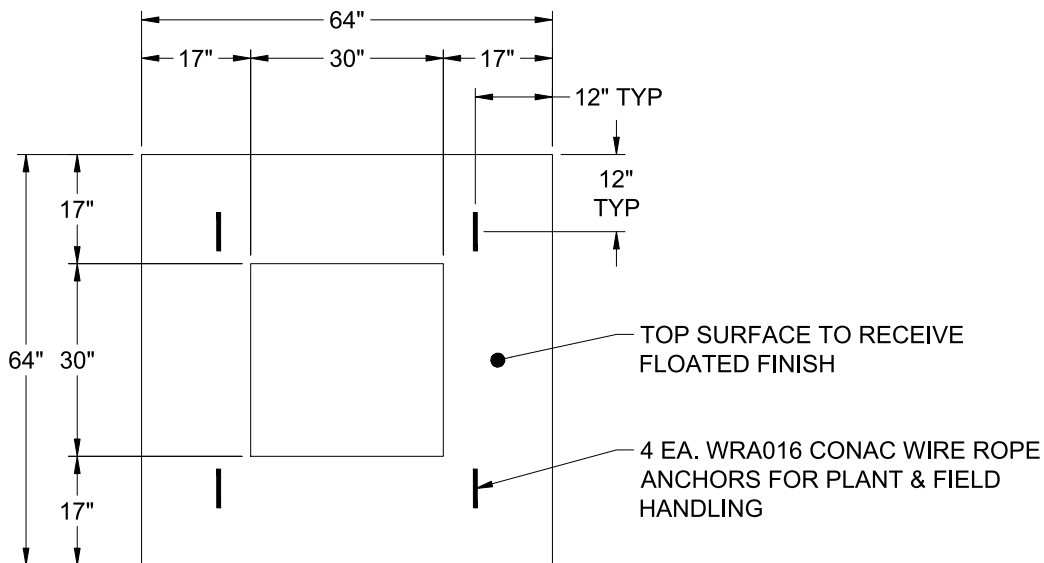
- P3) 30" x 30" - CASTING HEIGHT - 4"
- P2) 48" x 48" - CB FLAT TOP 8"W w/30"x30" HOLE F/F - 6"
- P1) 48" x 48" - BOX BASE 8inW, 8inF, Variable Ht F/n - 41"
- 1) CASTING - HOE 468 F/G
- 1) 48" x 48" - Conseal CS-102 1.00"
- 1) 30" x 30" - Conseal CS-102 1.00"
- 1) Hole - 12
- 2) Hole - 38

0 lb  
 1609 lb  
 7316 lb  
 489 lb  
 0 lb  
 0 lb  
 0 lb  
 0 lb  
 -----  
 9414 lb

Structure Total:

Structure Notes:

1. PER ASTM C-913 SPECIFICATIONS
2. CONCRETE: 4,000 PSI AT 28 DAYS
3. REINFORCEMENT: #5 BAR @ 6" C.C. E.W. (GRADE 60) - 2" MIN. REBAR CLEARANCE (TYP)
4. HOE 468 FRAME & GRATE SUPPLIED BY ICAST
5. LIFTERS: 4 EA. WRA016 CONAC WIRE ROPE ANCHORS FOR PLANT & FIELD HANDLING
6. TOP SURFACE TO RECEIVE FLOATED FINISH



Coating (Int):  
 Coating (Ext):

Seam Up: Flat  
 Seam Dn: Flat

Wall Thickness: 8"

Height (Ext): 6"

Weight (Net): 1609 lb  
 Volume (Net): 0.41cu.yd