

Job Name: 25-4726 Omega Fitness
 Job Location: Newbern, TN
 Contractor: Ainsworth Land Development, LLC

Plant: Beaver Dam
 5/28/2026 1:57:22 PM

Tech: S. Felletter
 PC: T. Lewis



Structure ID: DS-4

P2 MH048LD07

MH FLAT TOP w/ 24" Center Hole F/F

- P3) 24" - CASTING HEIGHT - 4"
- P2) 48" - MH FLAT TOP w/ 24" Center Hole F/F - 7"
- P1) 48" - MH BASE Custom Ht F/n - 26"
- 1) CASTING - JBS 1072 F/C STORM
- 1) 48" - Conseal CS-102 1.00"
- 1) 24" - Conseal CS-102 1.00"
- 2) Hole - 24"

0 lb
 1700 lb
 2752 lb
 250 lb
 0 lb
 0 lb
 0 lb
 0 lb

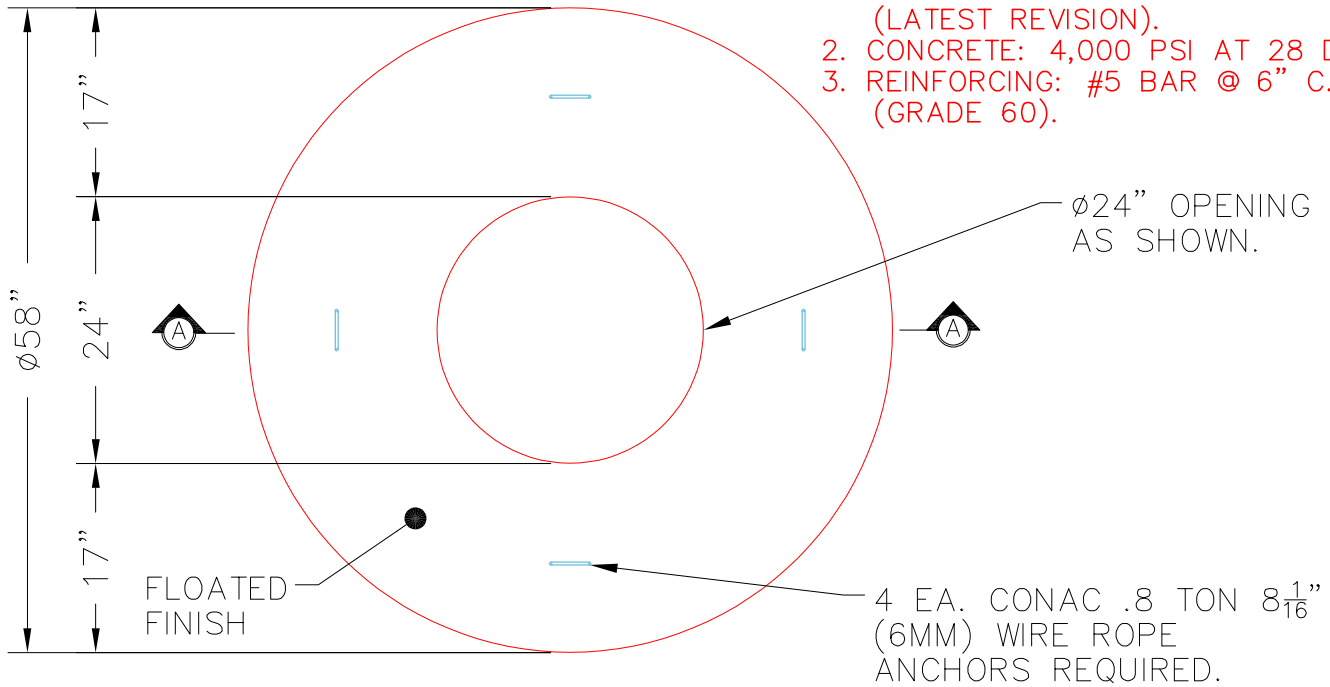
 Structure Total: 4702 lb

Structure Notes:
 1. PER ASTM C478 SPECIFICATIONS.
 2. CONCRETE = 4,000 PSI AT 28 DAYS.
 3. CASTING BY ICAST (JBS 1072 F/C "STORM").

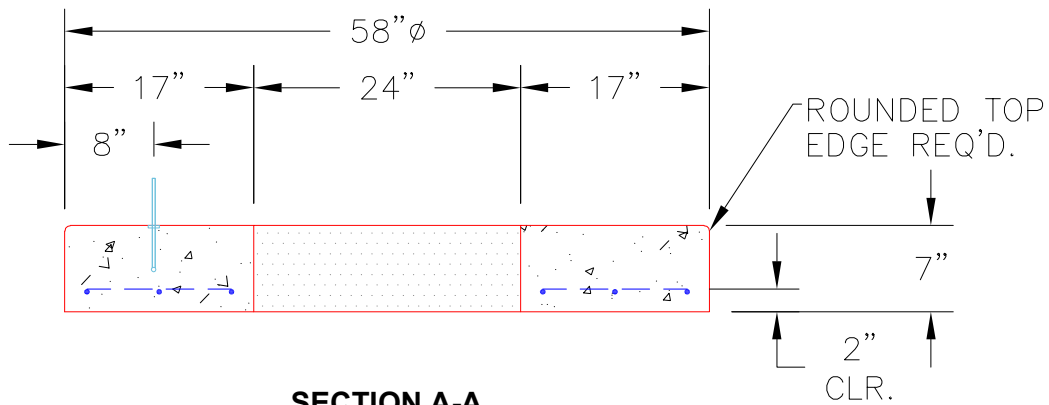
REINFORCING PER ASTM A615 (GRADE 60).
 - TOP SLAB (As .62) #5 BARS AT 6" C.C.E.W..
 - RISER/WALLS (As .12)
 - FLOOR (As .31) #5 BARS AT 12" C.C.E.W.

NOTES:

- 1. MANUFACTURED TO ASTM C-478 (LATEST REVISION).
- 2. CONCRETE: 4,000 PSI AT 28 DAYS.
- 3. REINFORCING: #5 BAR @ 6" C.C. E.W. (GRADE 60).



PLAN VIEW



SECTION A-A

Coating (Int): Coating (Ext):	Seam Up: Flat Seam Dn: Flat	Wall Thickness: 5"	Height (Ext): 7"	Weight (Net): 1700 lb Volume (Net): 0.42cu.yd
----------------------------------	--------------------------------	--------------------	------------------	--