

Job Name: 25-4726 Omega Fitness
 Job Location: Newbern, TN
 Contractor: Ainsworth Land Development, LLC

Plant: Beaver Dam
 5/28/2026 12:10:37 PM

Tech: S. Felletter
 PC: T. Lewis



Structure ID: DS-2

P2 BX036036-06LD08W-S

CB FLAT TOP 8"W w/24" F/G F/F

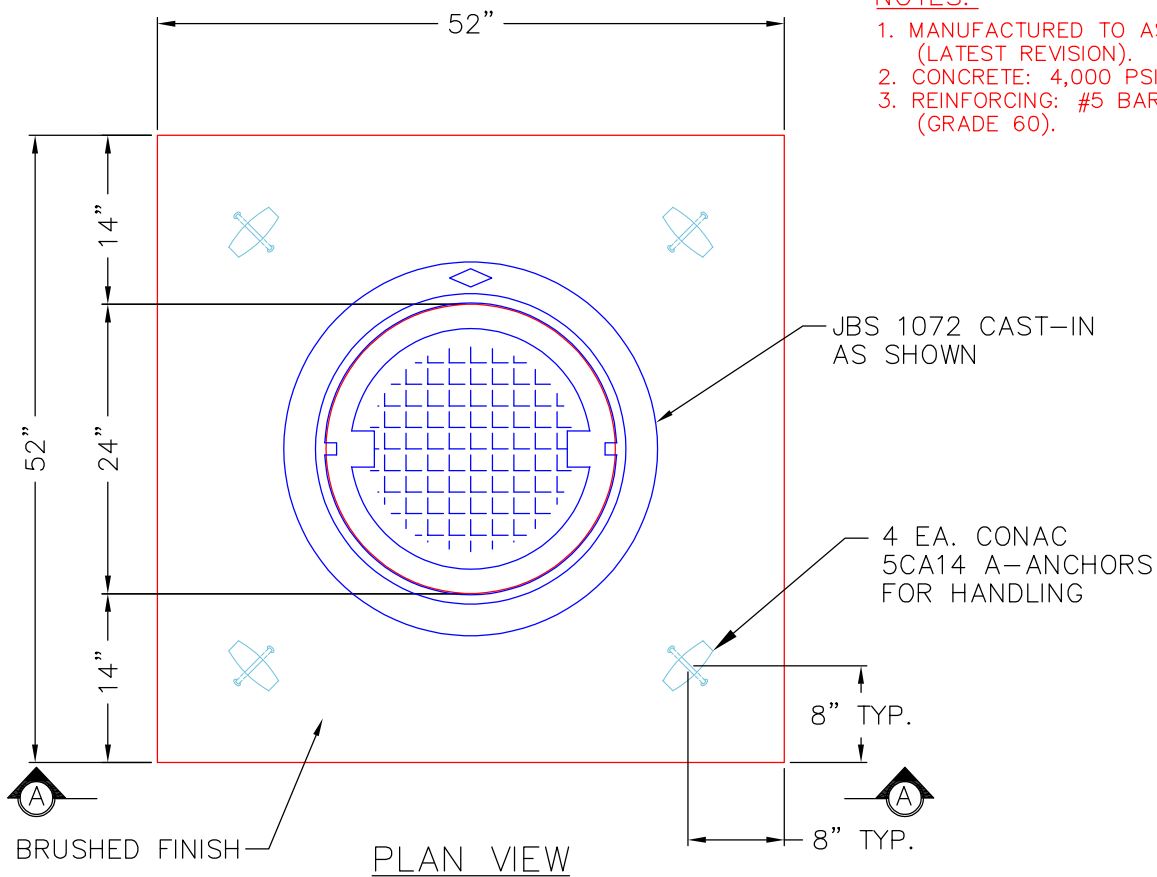
- P3) 24" - CASTING HEIGHT - 0"
- P2) 36" x 36" - CB FLAT TOP 8"W w/24" F/G F/F - 6"
- P1) 36" x 36" - BOX BASE 8inW, 8inF, Variable Ht F/n - 46"
- 1) CASTING - JBS 1072 F/C STORM
- 1) 36" x 36" - Conseal CS-102 1.00"
- 1) 24" - Conseal CS-102 1.00"
- 1) Hole - 16
- 1) Hole - 8
- 4) Horiz Slot n/n - 36"X6"

0 lb
 1134 lb
 6646 lb
 250 lb
 0 lb
 0 lb
 0 lb
 0 lb
 0 lb
 0 lb
 0 lb
 Structure Total: 8030 lb

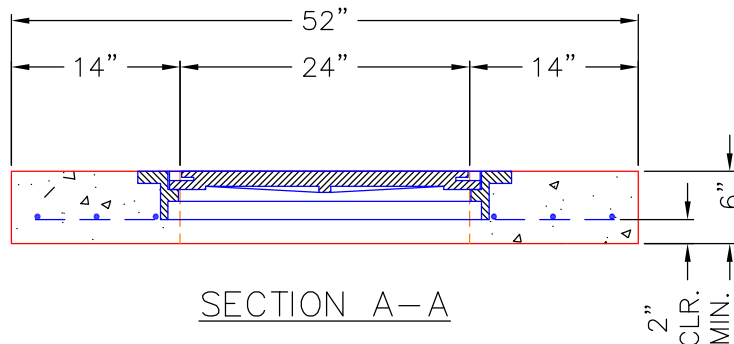
Structure Notes:
 1. PER ASTM C913 SPECIFICATIONS.
 2. CONCRETE = 4,000 PSI AT 28 DAYS.
 3. CASTING BY ICAST (JBS 1072 F/C "STORM").
 CAST-IN.
 4. PREFORMED INVERT BY OTHERS.

REINFORCING PER ASTM A615 (GRADE 60).
 - TOP SLAB (As .62) #5 BARS AT 6" C.C.E.W.
 - WALLS (As .12) #5 BARS AT 12" C.C.E.W.
 - FLOOR (As .12) #5 BARS AT 12" C.C.E.W.

RIM AND RECTANGULAR THROAT ELEVATIONS
 ADJUSTED SLIGHTLY TO LOCATE CORRECTLY IN
 BOX



- NOTES:**
1. MANUFACTURED TO ASTM C-913 (LATEST REVISION).
 2. CONCRETE: 4,000 PSI AT 28 DAYS.
 3. REINFORCING: #5 BAR @ 6" C.C. E.W. (GRADE 60).



Coating (Int): Coating (Ext):	Seam Up: Flat Seam Dn: Flat	Wall Thickness: 8"	Height (Ext): 6"	Weight (Net): 1134 lb Volume (Net): 0.29cu.yd
----------------------------------	--------------------------------	--------------------	------------------	--------------------------------------------------