

Job Name: 25-4508 - Georgetown Commons Target
 Job Location: Georgetown, KY
 Contractor: Winwater Hartford KY Co.

Plant: 100

5/28/2026 11:26:58 AM

Tech: Jared - F

PC: A. Chambers



Structure ID: 107 (29)

P2 MH060LD13

MH FLAT TOP w/ 24" ECC Hole F/G

- P3) 24" - CASTING HEIGHT - 7"
- P2) 60" - MH FLAT TOP w/ 24" ECC Hole F/G - 13"
- P1) 60" - MH BASE Custom Ht T/n - 71"
- 1) CASTING - HOE MC-375 F/C Storm
- 1) 60" - Conseal CS-102 1.00"
- 2) Hole - 38
- 1) Hole - 30
- 6) MH Step ML-10-TDS-NCR - 10"

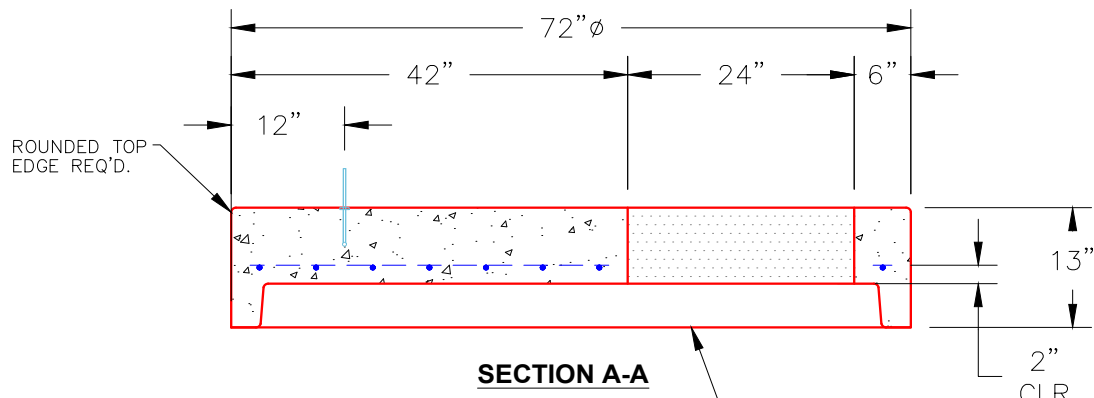
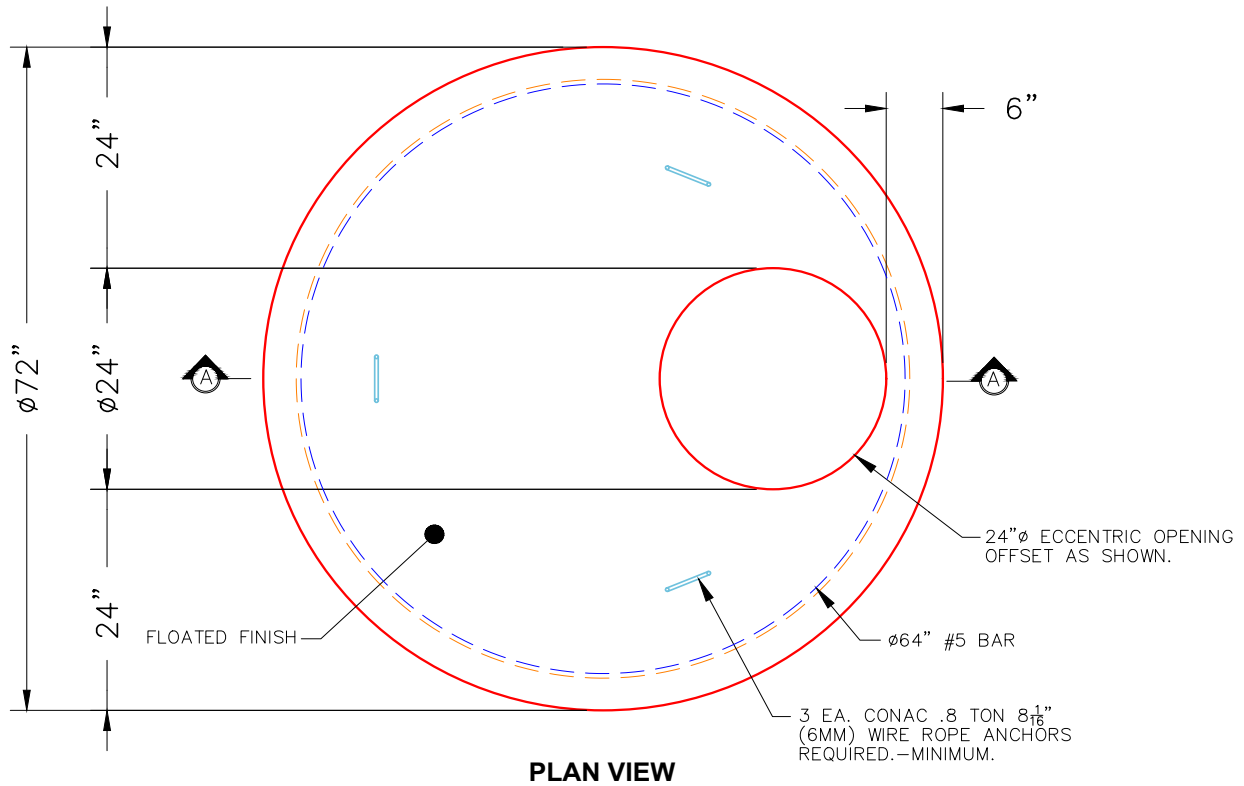
	0 lb
	2869 lb
	8555 lb
	271 lb
	0 lb
	0 lb
	0 lb
	0 lb
Structure Total:	11695 lb

Structure Notes:

1. PER ASTM C478 SPECIFICATIONS.
2. CONCRETE = 4,000 PSI AT 28 DAYS.
3. NO INVERT CHANNEL.
4. CASTING BY ICAST (HOE MC-375 F/C STORM).

REINFORCING PER ASTM A615 (GRADE 60).

- TOP SLAB (As .62) #5 BARS AT 6" C.C.E.W..
- RISER/WALLS (As .18)
- FLOOR (As .37) #5 BARS AT 10" C.C.E.W.



- NOTES:**
1. MANUFACTURED TO ASTM C-478 (LATEST REVISION).
 2. CONCRETE: 4,000 PSI AT 28 DAYS.
 3. REINFORCING: #5 BAR @ 6" O.C. E.W. (GRADE 60).

Coating (Int): Coating (Ext):	Seam Up: Flat Seam Dn: Groove	Wall Thickness: 6"	Height (Ext): 13"	Weight (Net): 2869 lb Volume (Net): 0.73cu.yd
----------------------------------	----------------------------------	--------------------	-------------------	--