

Job Name: 23-2404 Hampton Hills (Phase 1)
 Job Location: Richmond, KY
 Contractor: Seven Earthmovers LLC

Plant: 100

5/19/2026 12:59:16 PM

Tech: J. Horsley

PC: C. Golf



Structure ID: CBI-C2

P1 BX3660-08BAVF

BOX BASE 8inW, 8inF, Variable Ht T/n

- P5) 24" x 120" - CB INLET KY A 10' TOP RIGHT F/G - 10"
- P4) 24" x 120" - CB INLET KY A 10' BOTTOM RIGHT T/G - 18"
- P3) 36" x 60" - CB FT REDUCER 24"X36" HOLE T/F - 8"
- P2) 36" x 60" - BOX RISER 8inW, Variable Ht F/G - 42"
- P1) 36" x 60" - BOX BASE 8inW, 8inF, Variable Ht T/n - 87"
- 1) CASTING - HOE KY-206 F/C (KY CBI A)
- 1) SNOUT - BMP SNOUT 30F w/ KIT
- 2) 36" x 60" - Conseal CS-102 1.00"
- 1) 24" x 36" - Conseal CS-102 1.00"
- 1) Hole - 32
- 1) DOGHOUSE INVRTD - 32"x29"

3398 lb
 5270 lb
 2073 lb
 5521 lb
 15195 lb
 206 lb
 25 lb
 0 lb
 0 lb
 0 lb
 0 lb

 Structure Total: 31688 lb

Structure Notes:

1. PER KYTC CBI A / ASTM C913 SPEC'S.
2. CONCRETE = 4,000 PSI AT 28 DAYS.
3. CASTING (HOE KY-206) TO BE CAST INTO TOP PHASE.
4. BMP SNOUT 18F w/KIT.

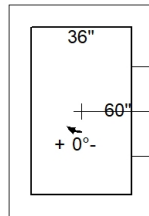
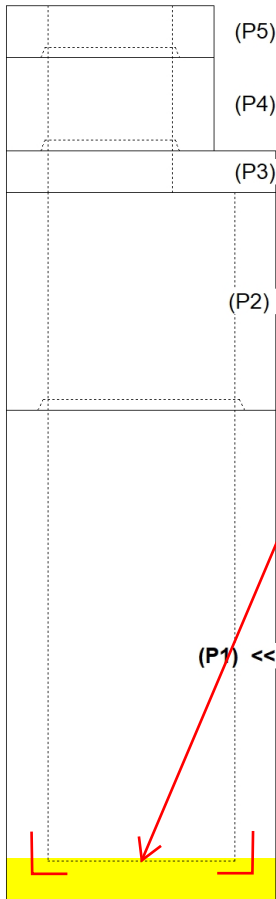
REINFORCING PER ASTM AS615 (GRADE 60).
 - TOP PHASE (As .62) #5 BARS AT 6" C.C.E.W.
 - BASE WALLS (As .31) #5 BARS AT 12" C.C.E.W.
 - BASE FLOOR (As .31) #5 BARS AT 12" C.C.E.W.

Rim: 884.19' Rim to Invert: 9.79' Slack: 0.48" Sump: 48" Step Position:

Position	Elev	Angle	Ext. (cw)	Pipe	Pipe OD	Connector	Hole	Horz Size	Up ()	Offset
Invert 1	874.4'	270°	38"	24" ADS N-12	28"	Hole 32	32"	32"	44"	0"
Invert 2										
Invert 3										
Invert 4										
Invert 5										
Invert 6										
Invert 7										
Invert 8										

RIGHT-SIDE UP VIEW (int. dimensions)

UPSIDE-DOWN VIEW (int. dimenions)

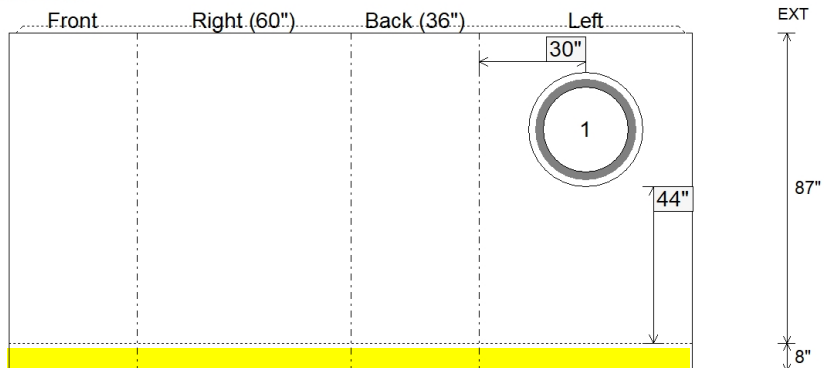


Invert: 1
 Degree: 270°
 Horz: 30"
 Hole: 32"
 Up(): 44"

1st POUR (FLOOR) = 2,664 LBS
 2nd POUR (WALLS) = 12,531 LBS

1st POUR (FLOOR)
 STUB #5 L BARS OUT TOP
 OF FLOOR FOR
 CONNECTING WALL

INSIDE WALL DIMENSIONS



Coating (Int):
 Coating (Ext):

Seam Up: Tongue
 Seam Dn: n/a

Wall Thickness: 8"
 Floor Height: 8"

Height (Int): 87"
 Height (Ext): 95"

Weight (Net): 15195 lb
 Volume (Net): 3.88cu.yd

Job Name: 23-2404 Hampton Hills (Phase 1)
 Job Location: Richmond, KY
 Contractor: Seven Earthmovers LLC

Plant: 100

Tech: J. Horsley

5/19/2026 12:59:16 PM

PC: C. Golf



Structure ID: CBI-C2

P1A BX3660-08BAVF

BOX BASE 8inW, 8inF, Variable Ht T/n

- P5) 24" x 120" - CB INLET KY A 10' TOP RIGHT F/G - 10"
- P4) 24" x 120" - CB INLET KY A 10' BOTTOM RIGHT T/G - 18"
- P3) 36" x 60" - CB FT REDUCER 24"X36" HOLE T/F - 8"
- P2) 36" x 60" - BOX RISER 8inW, Variable Ht F/G - 42"
- P1) 36" x 60" - BOX BASE 8inW, 8inF, Variable Ht T/n - 87"
- 1) CASTING - HOE KY-206 F/C (KY CBI A)
- 1) SNOUT - BMP SNOUT 30F w/ KIT
- 2) 36" x 60" - Conseal CS-102 1.00"
- 1) 24" x 36" - Conseal CS-102 1.00"
- 1) Hole - 32
- 1) DOGHOUSE INVRTD - 32"x29"

3398 lb
 5270 lb
 2073 lb
 5521 lb
 15195 lb
 206 lb
 25 lb
 0 lb
 0 lb
 0 lb
 0 lb

 Structure Total: 31688 lb

Structure Notes:

1. PER KYTC CBI A / ASTM C913 SPEC'S.
2. CONCRETE = 4,000 PSI AT 28 DAYS.
3. CASTING (HOE KY-206) TO BE CAST INTO TOP PHASE.
4. BMP SNOUT 18F w/KIT.

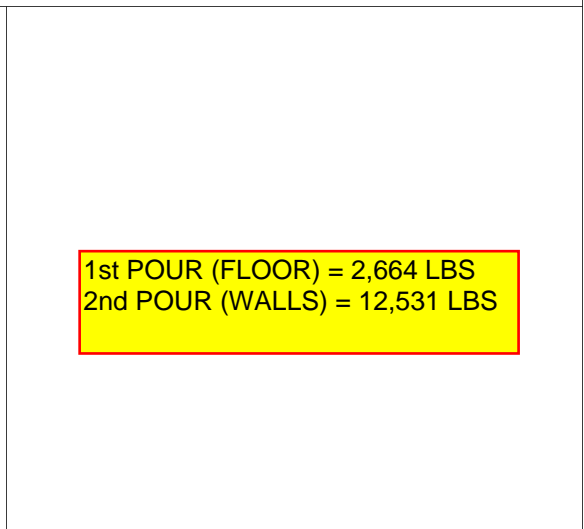
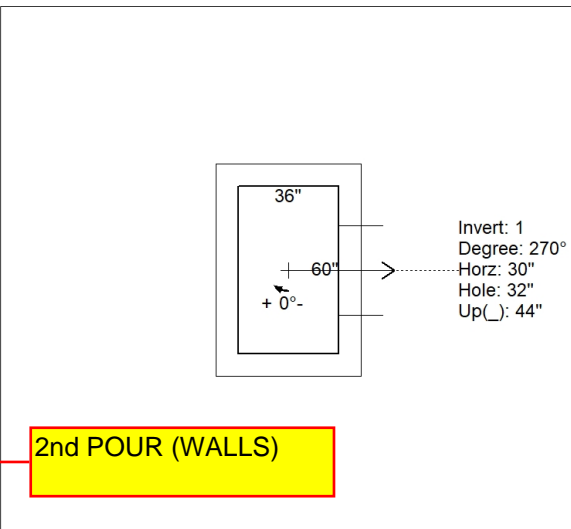
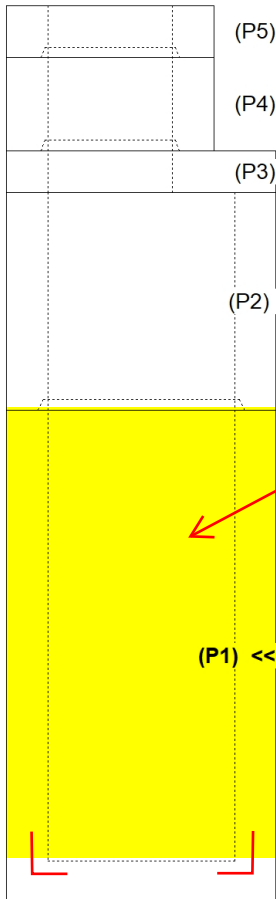
REINFORCING PER ASTM AS615 (GRADE 60).
 - TOP PHASE (As .62) #5 BARS AT 6" C.C.E.W.
 - BASE WALLS (As .31) #5 BARS AT 12" C.C.E.W.
 - BASE FLOOR (As .31) #5 BARS AT 12" C.C.E.W.

Rim: 884.19' Rim to Invert: 9.79' Slack: 0.48" Sump: 48" Step Position:

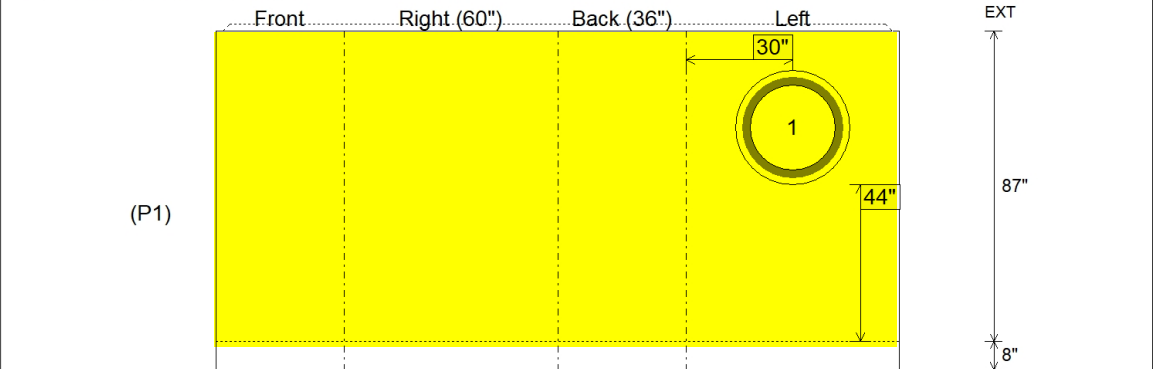
Position	Elev	Angle	Ext. (cw)	Pipe	Pipe OD	Connector	Hole	Horz Size	Up ()	Offset
Invert 1	874.4'	270°	38"	24" ADS N-12	28"	Hole 32	32"	32"	44"	0"
Invert 2										
Invert 3										
Invert 4										
Invert 5										
Invert 6										
Invert 7										
Invert 8										

RIGHT-SIDE UP VIEW (int. dimensions)

UPSIDE-DOWN VIEW (int. dimenions)



INSIDE WALL DIMENSIONS



Coating (Int):
 Coating (Ext):

Seam Up: Tongue
 Seam Dn: n/a

Wall Thickness: 8"
 Floor Height: 8"

Height (Int): 87"
 Height (Ext): 95"

Weight (Net): 15195 lb
 Volume (Net): 3.88cu.yd